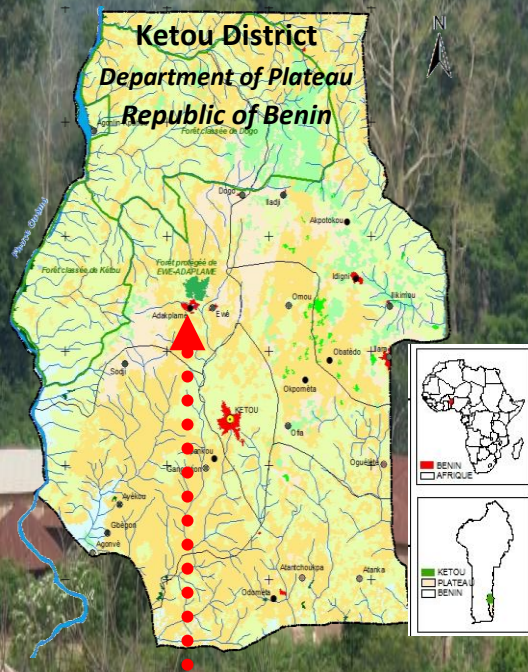


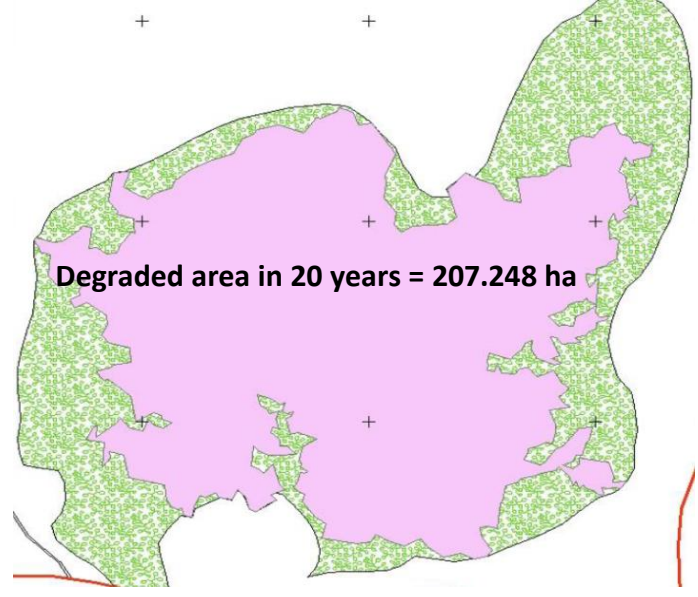
The Ewè Forest...



The remnant forest is shared by two villages and is still entirely managed by the local communities.



The village centers are gradually falling into ruin. Villages are extending very rapidly from the periphery to natural and sensitive areas. From 1987 to 2007, the remnant forest area decreased from 572 hectares to 364 hectares (ha).



There are 9,000 people. 69% of the population is younger than the age of 44.

Our goal...

Ensuring the long term restoration, conservation and sustainable management of the Ewe Forest, while also awaring local communities to the importance of nature and biodiversity

- Activities in course in 2014 :**
- 1.. Diagnostic of the forest
 - 2.. Seed collection
 - 3.. Vegetative Propagation
 - 4.. Planting Campaign

- Specific actions provided for 2017:**
- 1.. Rehabilitate the remnant forest of EWE in the southeast of Benin Republic (BR).
 - 2.. Construct a borehole station between villages to bringing immediately, a sustainably source of year-round water.
 - 3.. Restore degraded areas and restore the historic landscape of the villages.
 - 4.. Develop a trail of 8 kilometers and 0.4 hectares of garden for agrotourism.

The engagement and participation of local communities is the key to ensure the conservation and long term recovery of the Ewè forest!

The forest is located in the Ketou District, at 140 kilometers far from the city of Porto-Novo (the capital of the BR).



The remnant forest of Ewè hosts a quarter of threatened plants species of Benin Republic

Our priorities...



Tutoring, environmental education



Drilling a well, planting activities



Vegetable crops, agritourism



Biodiversity inventory



Restoration of traditional knowledges

This project is supported by



Foundation

www.rufford.org

Managed by

AGIR

AGIR is an association for the development and the management of local resources in Western African countries.

The aim is to :

1. Empower local communities in the implementation of urgent actions in favor of sustainable conservation of tropical biodiversity.
2. Stimulate the holders of traditional ecological knowledge to restoration and transmission of endogenous practices to future generations.

Help us restore Ewe Forest,

Get involved!

Contact: quenh77@gmail.com

mathieu.gardere@hotmail.fr

+33615021724 (Montpellier, France)

+22997079057 (Cotonou, Benin)

+22966503565 (Kétou, Benin)

http://www.rufford.org/projects/alfred_houngnon

Acting on **BENIN!**



Conservation
of

Remnant forest of Ewè